



ASNET

Presentation During Farm 'Innov Connection Event

Agatha Thuo (GM)

July 23, 2024



ASNET, The voice of Kenyan agriculture

ASNET Launch

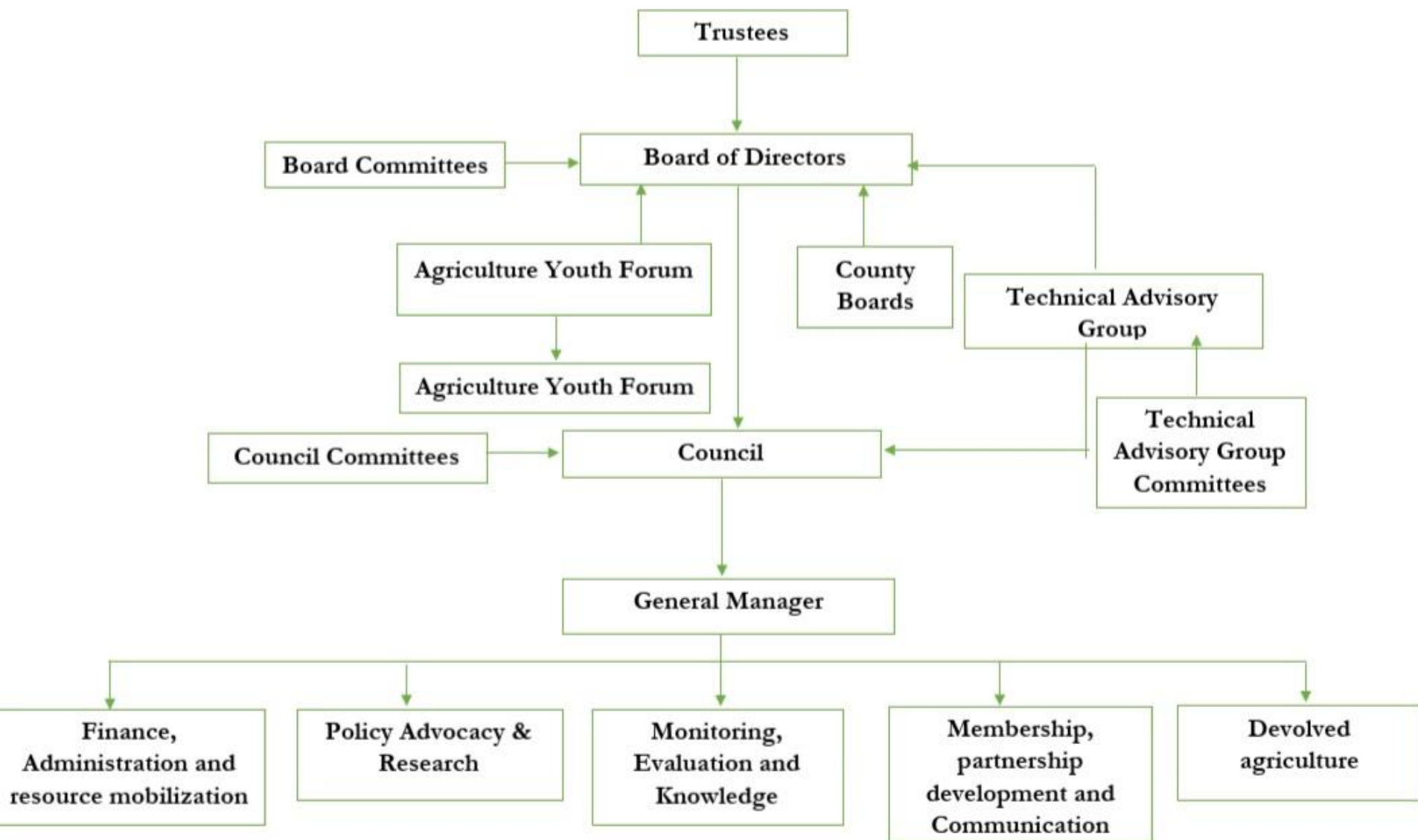


Who we are



- ASNET is the umbrella body of the agriculture sector in Kenya
- ASNET is the Agriculture arm of the Kenya Private Sector Alliance (KEPSA)
- Member of Intergovernmental Forum-Agriculture(IGF-A)
- Formed through a partnership of KEPSA, Kenya National Chamber of Commerce & Industry(KNCCI), SDG partnership platform of the United Nations with support from BAF, Elgon Kenya Limited, like minded business associations, partners and other stakeholders

- Consolidate/Coordinate fragmented agriculture private sector actors for agriculture leading to growth, inclusive wealth and creation of decent jobs.
- Mainstream Agriculture Related Policy, legal, regulatory and institutional aspects for a Competitive and Enabling Business Environment
- Facilitate Trade and Investment
- Development of Agriculture value chains
- Inclusivity of agriculture sector growth-Youth, Women, Vulnerable



- Business associations all value chain
- KAM
- Corporates
- Affiliates
- MSMEs
- Academia & research, NGOs
- Finance Institutions *MFIs*
- Apex Farmer Bodies

(Kenya National Farmers Federation)

<https://www.asnet.or.ke>

The post-harvest system

Encompasses a sequence of activities and operations that can be divided into two groups:

- Technical activities: harvesting, field drying, threshing, cleaning, additional drying, storage, processing;
- Economic activities: transporting, marketing, quality control, nutrition, extension, information and communication, administration and management.

Post-Harvest Losses: Definition

The degradation in both **quantity** and **quality** of a food production from harvest to consumption. Quality losses include those that affect the nutrient/caloric composition, the acceptability, and the edibility of a given product.

Estimated at 30% in cereals, 50% in roots & tubers, and up to 70% in fruits and vegetables

Loss estimated at \$ 500 Million Annually(WFP 2003)

- Moisture content
- Damage
- Direct and indirect losses
- Weight loss
- Quality loss
- Food loss
- Seed viability loss
- Commercial loss
- Irreducible losses and compensation

Post-Harvest Losses: Applied Solutions-Kenya Context

- Contract farming
- Productivity
- Inputs
- Utilization of modern and new technologies-ASNET membership
(agro-processing infrastructure- collection centers, sorting, pack houses, cold storages; refrigeration tanks; development of cold rooms, supply of processing machineries, competitive ocean and air freight services
- Capacity building
- WHRS



Thank You!

Website: <https://www.asnet.or.ke>

Email: info@asnet.or.ke



ASNET, The voice of Kenyan agriculture